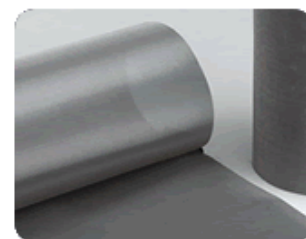
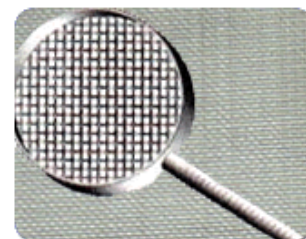


Welded*



Материал: Неръждаема стомана

Material: AISI 304

MESH	Wire diameter d mm	Opening W mm	Working surface	
			S %	
1	Welded*	1.95	23.40	-
2	Welded*	1.20	11.50	-
2		1.60	11.10	76.39
3		1.60	6.87	65.77
3.5		1.40	5.86	65.13
4		1.20	5.15	65.77
5		1.00	4.08	65.40
6		0.90	3.33	62.00
8		0.70	2.48	60.77
10		0.60	1.94	58.34
12		0.50	1.62	58.34
14		0.50	1.31	52.48
16		0.40	1.19	55.96
18		0.40	1.01	51.34
20		0.24	1.03	65.78
20		0.40	0.87	46.93
20		0.50	0.77	36.76
24		0.35	0.71	44.80

MESH	Wire diameter d mm	Opening W mm	Working surface
			S %
30	0.28	0.57	44.80
30	0.30	0.55	41.69
40	0.14	0.50	60.77
40	0.22	0.42	42.71
40	0.24	0.40	38.69
50	0.20	0.31	36.76
60	0.16	0.26	38.69
60	0.18	0.24	33.04
80	0.14	0.178	31.25
90	0.12	0.162	33.04
100	0.11	0.144	32.14
120	0.08	0.132	38.69
150	0.06	0.109	41.87
180	0.05	0.091	41.87
200	0.05	0.077	36.76
250	0.04	0.062	36.76
300	0.03	0.055	41.87

Доставят се на рула с широчина 1000mm

Available in Rolls 1000mm width