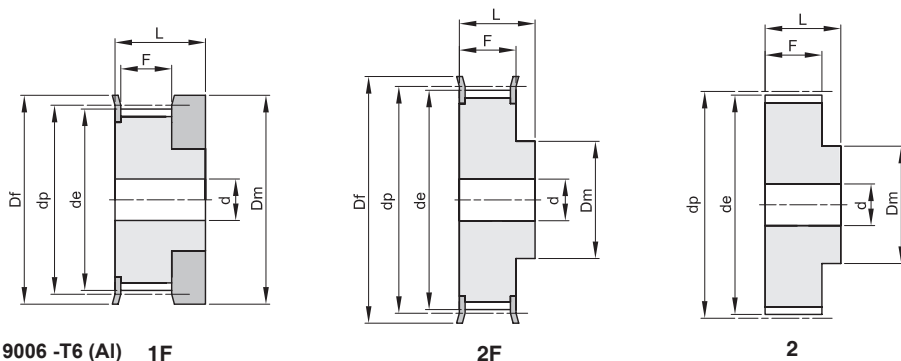


3M

PITCH 3 mm
FOR BELT WIDTH 9 mm



Материал Алуминий / Material Aluminum UNI 9006 -T6 (Al) 1F

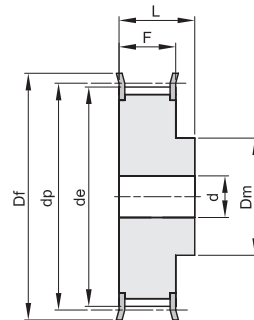
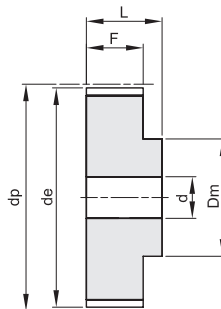
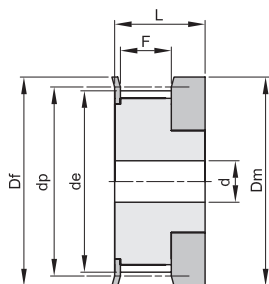
2F

2

code	type	material	teeth	dp	de	Df	Dm	Di	F	L	d	n° flange	Kg.
10 3M 09	1F	Al	10	9,55	8,79	13,0	12,0		10,2	17,5		100	0,01
12 3M 09	1F	Al	12	11,46	10,70	15,0	15,0		10,2	17,5		101	0,01
14 3M 09	1F	Al	14	13,37	12,61	16,0	16,0		10,2	17,5		102	0,01
15 3M 09	1F	Al	15	14,32	13,56	18,0	17,5		10,2	17,5		104	0,01
16 3M 09	2F	Al	16	15,28	14,52	18,0	10,0		12,8	20,6	4	104	0,01
18 3M 09	2F	Al	18	17,19	16,43	19,5	11,0		12,8	20,6	6	105	0,01
20 3M 09	2F	Al	20	19,10	18,34	23,0	13,0		12,8	20,6	6	107	0,01
21 3M 09	2F	Al	21	20,05	19,29	25,0	14,0		12,8	20,6	6	108	0,01
22 3M 09	2F	Al	22	21,01	20,25	25,0	14,0		12,8	20,6	6	108	0,01
24 3M 09	2F	Al	24	22,92	22,16	25,0	14,0		12,8	20,6	6	108	0,02
26 3M 09	2F	Al	26	24,83	24,07	28,0	16,0		12,8	20,6	6	109	0,02
28 3M 09	2F	Al	28	26,74	25,98	32,0	18,0		12,8	20,6	6	110	0,02
30 3M 09	2F	Al	30	28,65	27,89	32,0	20,0		12,8	20,6	6	110	0,03
32 3M 09	2F	Al	32	30,56	29,80	36,0	22,0		12,8	20,6	6	111	0,03
36 3M 09	2F	Al	36	34,38	33,62	38,0	26,0		13,4	22,2	6	112	0,05
40 3M 09	2F	Al	40	38,20	37,44	42,0	28,0		13,4	22,2	6	113	0,06
44 3M 09	2F	Al	44	42,02	41,26	48,0	33,0		13,4	22,2	6	114	0,07
48 3M 09	2	Al	48	45,84	45,08		33,0		13,4	22,2	8		0,11
60 3M 09	2	Al	60	57,30	56,54		33,0		13,4	22,2	8		0,11
72 3M 09	2	Al	72	68,76	68,00		33,0		13,4	22,2	8		0,15

3M

PITCH 3 mm
FOR BELT WIDTH 15 mm



Материал Алуминий / Material Aluminum UNI 9006 -T6 (Al) 1F

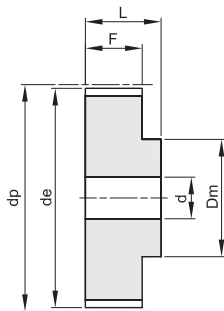
2

2F

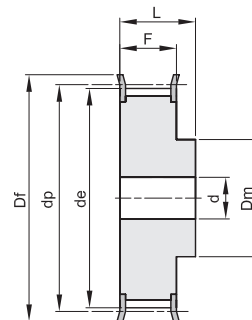
code	type	material	teeth	dp	de	Df	Dm	Di	F	L	d	n° flange	Kg.
10 3M 15	1F	Al	10	9,55	8,79	13,0	12,0		17,0	26,0		100	0,01
12 3M 15	1F	Al	12	11,46	10,70	15,0	15,0		17,0	26,0		101	0,01
14 3M 15	1F	Al	14	13,37	12,61	16,0	16,0		17,0	26,0		102	0,01
15 3M 15	1F	Al	15	14,32	13,56	18,0	17,5		17,0	26,0		104	0,01
16 3M 15	2F	Al	16	15,28	14,52	18,0	10,0		19,5	26,0	4	104	0,01
18 3M 15	2F	Al	18	17,19	16,43	19,5	11,0		19,5	26,0	6	105	0,01
20 3M 15	2F	Al	20	19,10	18,34	23,0	13,0		19,5	26,0	6	107	0,01
21 3M 15	2F	Al	21	20,05	19,29	25,0	14,0		19,5	26,0	6	108	0,02
22 3M 15	2F	Al	22	21,01	20,25	25,0	14,0		19,5	26,0	6	108	0,02
24 3M 15	2F	Al	24	22,92	22,16	25,0	14,0		19,5	26,0	6	108	0,02
26 3M 15	2F	Al	26	24,83	24,07	28,0	16,0		19,5	26,0	6	109	0,03
28 3M 15	2F	Al	28	26,74	25,98	32,0	18,0		19,5	26,0	6	110	0,03
30 3M 15	2F	Al	30	28,65	27,89	32,0	20,0		19,5	26,0	6	110	0,04
32 3M 15	2F	Al	32	30,56	29,80	36,0	22,0		19,5	26,0	6	111	0,04
36 3M 15	2F	Al	36	34,38	33,62	38,0	26,0		20,0	30,0	6	112	0,06
40 3M 15	2F	Al	40	38,20	37,44	42,0	28,0		20,0	30,0	6	113	0,08
44 3M 15	2F	Al	44	42,02	41,26	48,0	33,0		20,0	30,0	6	114	0,10
48 3M 15	2	Al	48	45,84	45,08		33,0		20,0	30,0	8		0,10
60 3M 15	2	Al	60	57,30	56,54		33,0		20,0	30,0	8		0,15
72 3M 15	2	Al	72	68,76	68,00		33,0		20,0	30,0	8		0,21

5M

PITCH 5 mm
FOR BELT WIDTH 9 mm



2



2F

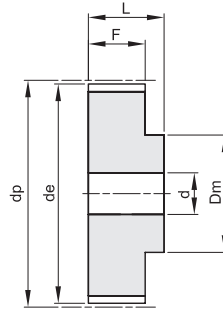
Материал Стомана (St) / Material Steel (St)

Материал Алуминий / Material Aluminum UNI 9006 -T6 (Al)

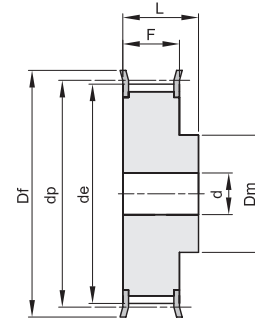
code	type	material	teeth	dp	de	Df	Dm	Di	F	L	d	n° flange	Kg.
12 5M 09	2F	St	12	19,10	17,96	23	12,5		14,5	20,0	6	202	0,03
14 5M 09	2F	St	14	22,28	21,14	25	13,5		14,5	20,0	6	203	0,04
15 5M 09	2F	St	15	23,87	22,73	28	16,0		14,5	20,0	6	204	0,05
16 5M 09	2F	St	16	25,46	24,32	28	16,5		14,5	20,0	6	204	0,06
18 5M 09	2F	St	18	28,65	27,51	32	20,0		14,5	20,0	6	205	0,07
20 5M 09	2F	St	20	31,83	30,69	36	23,0		14,5	22,5	6	206	0,10
21 5M 09	2F	St	21	33,42	32,28	38	24,0		14,5	22,5	6	207	0,12
22 5M 09	2F	St	22	35,01	33,87	38	25,5		14,5	22,5	6	207	0,13
24 5M 09	2F	St	24	38,20	37,06	42	27,0		14,5	22,5	6	208	0,15
26 5M 09	2F	St	26	41,38	40,24	44	30,0		14,5	22,5	6	209	0,18
28 5M 09	2F	St	28	44,56	43,42	48	30,5		14,5	22,5	6	210	0,21
30 5M 09	2F	St	30	47,75	46,60	51	35,0		14,5	22,5	6	211	0,25
32 5M 09	2F	St	32	50,93	49,79	54	38,0		14,5	22,5	8	212	0,28
36 5M 09	2F	St	36	57,30	56,16	60	38,0		14,5	22,5	8	214	0,33
40 5M 09	2F	St	40	63,66	62,52	71	38,0		14,5	22,5	8	217	0,42
44 5M 09	2	Al	44	70,03	68,89		38,0		14,5	25,5	8		0,17
48 5M 09	2	Al	48	76,39	75,25		45,0		14,5	25,5	8		0,18
60 5M 09	2	Al	60	95,49	94,35		45,0		14,5	25,5	8		0,23
72 5M 09	2	Al	72	114,59	113,45		45,0		14,5	25,5	8		0,42

5M

PITCH 5 mm
FOR BELT WIDTH 15 mm



2



2F

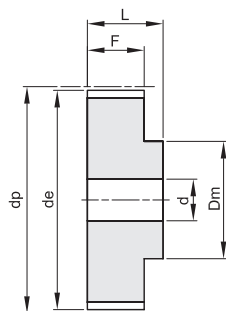
Материал Стомана (St) / Material Steel (St)

Материал Алюминий / Material Aluminum UNI 9006 -T6 (Al)

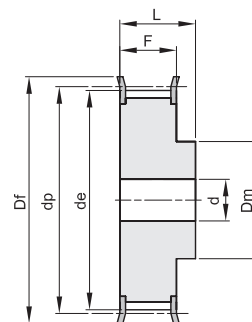
code	type	material	teeth	dp	de	Df	Dm	Di	F	L	d	n° flange	Kg.
12 5M 15	2F	St	12	19,10	17,96	23	12,5		20,5	26	6	202	0,03
14 5M 15	2F	St	14	22,28	21,14	25	13,5		20,5	26	6	203	0,04
15 5M 15	2F	St	15	23,87	22,73	28	16,0		20,5	26	6	204	0,05
16 5M 15	2F	St	16	25,46	24,32	28	16,5		20,5	26	6	204	0,06
18 5M 15	2F	St	18	28,65	27,51	32	20,0		20,5	26	6	205	0,09
20 5M 15	2F	St	20	31,83	30,69	36	23,0		20,5	26	6	206	0,12
21 5M 15	2F	St	21	33,42	32,28	38	24,0		20,5	26	6	207	0,14
22 5M 15	2F	St	22	35,01	33,87	38	25,5		20,5	26	6	207	0,15
24 5M 15	2F	St	24	38,20	37,06	42	27,0		20,5	28	6	208	0,19
26 5M 15	2F	St	26	41,38	40,24	44	30,0		20,5	28	6	209	0,23
28 5M 15	2F	St	28	44,56	43,42	48	30,5		20,5	28	6	210	0,26
30 5M 15	2F	St	30	47,75	46,60	51	35,0		20,5	28	6	211	0,32
32 5M 15	2F	St	32	50,93	49,79	54	38,0		20,5	28	8	212	0,35
36 5M 15	2F	St	36	57,30	56,16	60	38,0		20,5	28	8	214	0,43
40 5M 15	2F	St	40	63,66	62,52	71	38,0		20,5	28	8	217	0,52
44 5M 15	2	Al	44	70,03	68,89		38,0		20,5	30	8		0,23
48 5M 15	2	Al	48	76,39	75,25		38,0		20,5	30	8		0,29
60 5M 15	2	Al	60	95,49	94,35		50,0		20,5	30	8		0,42
72 5M 15	2	Al	72	114,59	113,45		50,0		20,5	30	8		0,59

5M

PITCH 5 mm
FOR BELT WIDTH 25 mm



2



2F

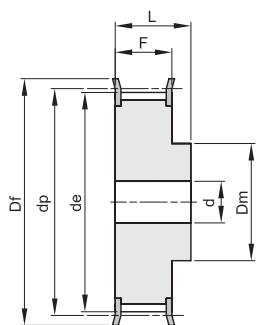
Материал Стомана (St) / Material Steel (St)

Материал Алуминий / Material Aluminum UNI 9006 -T6 (Al)

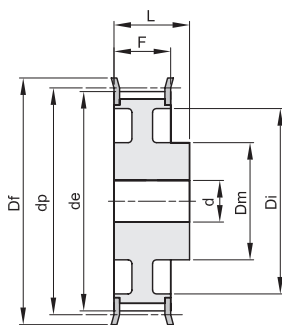
code	type	material	teeth	dp	de	Df	Dm	Di	F	L	d	n° flange	Kg.
12 5M 25	2F	St	12	19,10	17,96	23	12,5		30,5	36	6	202	0,05
14 5M 25	2F	St	14	22,28	21,14	25	13,5		30,5	36	6	203	0,08
15 5M 25	2F	St	15	23,87	22,73	28	16,0		30,5	36	6	204	0,09
16 5M 25	2F	St	16	25,46	24,32	28	16,5		30,5	36	6	204	0,11
18 5M 25	2F	St	18	28,65	27,51	32	20,0		30,5	36	6	205	0,13
20 5M 25	2F	St	20	31,83	30,69	36	23,0		30,5	36	6	206	0,17
21 5M 25	2F	St	21	33,42	32,28	38	24,0		30,5	38	6	207	0,20
22 5M 25	2F	St	22	35,01	33,87	38	25,5		30,5	38	6	207	0,22
24 5M 25	2F	St	24	38,20	37,06	42	27,0		30,5	38	6	208	0,26
26 5M 25	2F	St	26	41,38	40,24	44	30,0		30,5	38	6	209	0,32
28 5M 25	2F	St	28	44,56	43,42	48	30,5		30,5	38	6	210	0,37
30 5M 25	2F	St	30	47,75	46,60	51	35,0		30,5	38	6	211	0,42
32 5M 25	2F	St	32	50,93	49,79	54	38,0		30,5	38	8	212	0,48
36 5M 25	2F	St	36	57,30	56,16	60	38,0		30,5	38	8	214	0,59
40 5M 25	2F	St	40	63,66	62,52	71	38,0		30,5	38	8	217	0,75
44 5M 25	2	Al	44	70,03	68,89		38,0		30,5	40	8		0,32
48 5M 25	2	Al	48	76,39	75,25		38,0		30,5	40	8		0,28
60 5M 25	2	Al	60	95,49	94,35		50,0		30,5	40	8		0,44
72 5M 25	2	Al	72	114,59	113,45		50,0		30,5	40	8		0,85

8M

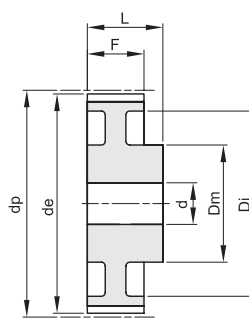
PITCH 8 mm
FOR BELT WIDTH 20 mm



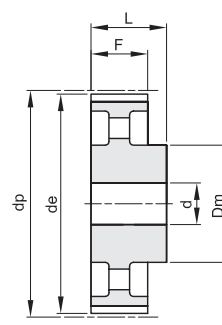
2F



3F



3



4

Материал Стомана (St) / Material Steel (St)

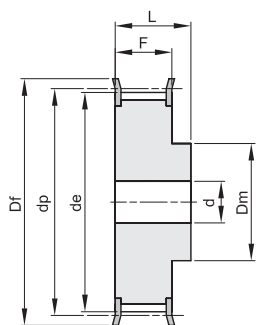
Материал Чугун (GG) / Material Cast Iron (GG)

code	type	material	teeth	dp	de	Df	Dm	Di	F	L	d	n° flange	Kg.
22 8M 20	2F	St	22	56,02	54,65	60	43		28	38	12	308	0,54
24 8M 20	2F	St	24	61,11	59,74	66	45		28	38	12	310	0,65
26 8M 20	2F	St	26	66,21	64,84	71	48		28	38	12	311	0,80
28 8M 20	2F	St	28	71,30	70,08	75	50		28	38	14	312	0,88
30 8M 20	2F	St	30	76,39	75,13	83	55		28	38	14	314	1,00
32 8M 20	2F	St	32	81,49	80,16	87	60		28	38	14	315	1,20
34 8M 20	2F	St	34	86,58	85,21	91	66		28	38	14	316	1,40
36 8M 20	2F	St	36	91,67	90,30	98	70		28	38	14	319	1,60
38 8M 20	2F	St	38	96,77	95,39	103	75		28	38	14	320	1,70
40 8M 20	2F	St	40	101,86	100,49	106	75		28	38	14	321	1,85
44 8M 20	2F	St	44	112,05	110,67	119	75		28	38	14	325	2,10
48 8M 20	2F	St	48	122,23	120,86	127	75		28	38	14	327	2,50
56 8M 20	3F	St	56	142,60	141,23	148	80	116	28	38	14	333	2,82
64 8M 20	3F	St	64	162,97	161,60	168	80	137	28	38	14	338	3,22
72 8M 20	3F	St	72	183,35	181,97	192	80	158	28	38	14	340	3,74
80 8M 20	3	GG	80	203,72	202,35		90	180	28	38	14		3,78
90 8M 20	3	GG	90	229,18	227,81		90	204	28	38	14		4,57
* 112 8M 20	4	GG	112	285,21	283,83		90	254	28	38	18		
* 144 8M 20	4	GG	144	366,69	365,32		90	336	28	38	20		
* 168 8M 20	4	GG	168	427,81	426,44		100	400	28	38	20		
* 192 8M 20	4	GG	192	488,92	487,55		100	460	28	38	20		

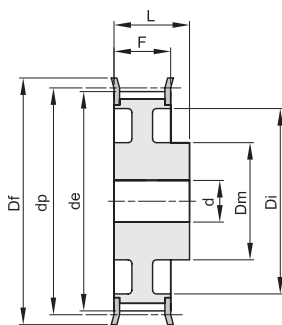
* Manufactured on request.

8M

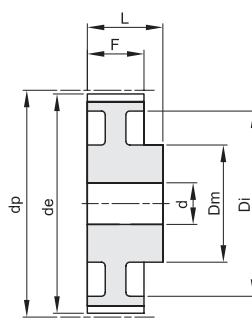
PITCH 8 mm
FOR BELT WIDTH 30 mm



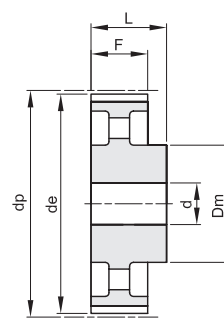
2F



3F



3



4

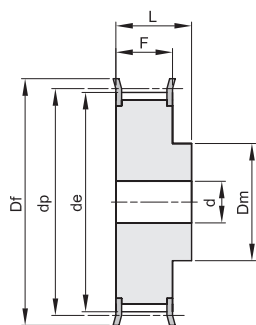
Материал Стомана (St) / Material Steel (St)

Материал Чугун (GG) / Material Cast Iron (GG)

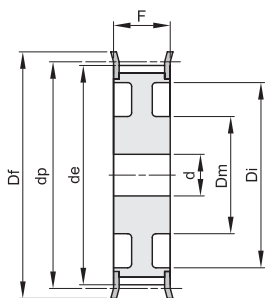
code	type	material	teeth	dp	de	Df	Dm	Di	F	L	d	n° flange	Kg.
22 8M 30	2F	St	22	56,02	54,65	60	43		38	48	12	308	0,75
24 8M 30	2F	St	24	61,11	59,74	66	45		38	48	12	310	0,90
26 8M 30	2F	St	26	66,21	64,84	71	48		38	48	12	311	1,10
28 8M 30	2F	St	28	71,30	70,08	75	50		38	48	14	312	1,20
30 8M 30	2F	St	30	76,39	75,13	83	55		38	48	14	314	1,32
32 8M 30	2F	St	32	81,49	80,16	87	60		38	48	14	315	1,55
34 8M 30	2F	St	34	86,58	85,21	91	66		38	48	14	316	1,80
36 8M 30	2F	St	36	91,67	90,30	98	70		38	48	14	319	2,10
38 8M 30	2F	St	38	96,77	95,39	103	75		38	48	14	320	2,30
40 8M 30	2F	St	40	101,86	100,49	106	75		38	48	14	321	2,47
44 8M 30	2F	St	44	112,05	110,67	119	75		38	48	14	325	2,95
48 8M 30	2F	St	48	122,23	120,86	127	75		38	48	14	327	3,30
56 8M 30	3F	St	56	142,60	141,23	148	90	116	38	48	14	333	4,02
64 8M 30	3F	St	64	162,97	161,60	168	90	137	38	48	14	338	4,60
72 8M 30	3F	St	72	183,35	181,97	192	95	158	38	48	14	340	5,41
80 8M 30	3	GG	80	203,72	202,35		100	180	38	48	14		5,23
90 8M 30	3	GG	90	229,18	227,81		100	204	38	48	14		6,42
112 8M 30	4	GG	112	285,21	283,83		100	254	38	48	18		8,12
144 8M 30	4	GG	144	366,69	365,32		100	336	38	48	20		10,36
168 8M 30	4	GG	168	427,81	426,44		100	400	38	48	20		12,37
192 8M 30	4	GG	192	488,92	487,55		100	460	38	48	20		14,31

8M

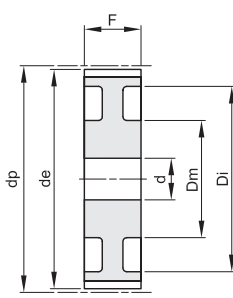
PITCH 8 mm
FOR BELT WIDTH 50 mm



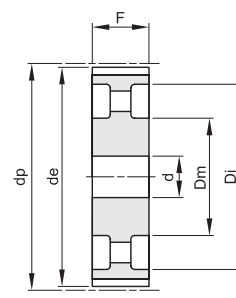
2F



7F



7



8

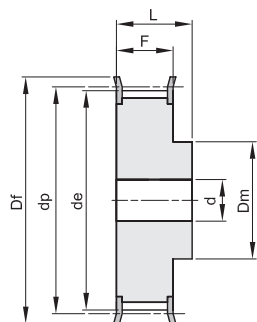
Материал Стomанa (St) / Material Steel (St)

Материал Чyгyн (GG) / Material Cast Iron (GG)

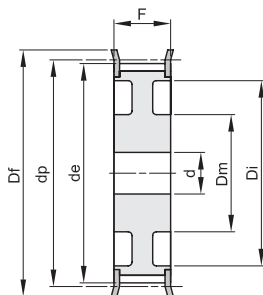
code	type	material	teeth	dp	de	Df	Dm	Di	F	L	d	n° flange	Kg.
22 8M 50	2F	St	22	56,02	54,65	60	43		60	70	12	308	1,10
24 8M 50	2F	St	24	61,11	59,74	66	45		60	70	12	310	1,30
26 8M 50	2F	St	26	66,21	64,84	71	48		60	70	12	311	1,60
28 8M 50	2F	St	28	71,30	70,08	75	50		60	70	14	312	1,70
30 8M 50	2F	St	30	76,39	75,13	83	55		60	70	14	314	2,00
32 8M 50	2F	St	32	81,49	80,16	87	60		60	70	14	315	2,35
34 8M 50	2F	St	34	86,58	85,21	91	66		60	70	14	316	2,80
36 8M 50	2F	St	36	91,67	90,30	98	70		60	70	14	319	3,10
38 8M 50	2F	St	38	96,77	95,39	103	75		60	70	14	320	3,30
40 8M 50	2F	St	40	101,86	100,49	106	75		60	70	14	321	3,60
44 8M 50	2F	St	44	112,05	110,67	119	75		60	70	14	325	4,40
48 8M 50	2F	St	48	122,23	120,86	127	75		60	70	14	327	5,00
56 8M 50	7F	St	56	142,60	141,23	148	90	116	60	60	18	333	5,68
64 8M 50	7F	St	64	162,97	161,60	168	100	137	60	60	18	338	6,93
72 8M 50	7F	St	72	183,35	181,97	192	100	158	60	60	18	340	7,95
80 8M 50	7	GG	80	203,72	202,35		110	180	60	60	18		7,96
90 8M 50	7	GG	90	229,18	227,81		110	204	60	60	18		9,20
112 8M 50	8	GG	112	285,21	283,83		110	254	60	60	18		12,16
144 8M 50	8	GG	144	366,69	365,32		110	336	60	60	20		15,68
168 8M 50	8	GG	168	427,81	426,44		120	400	60	60	20		18,99
192 8M 50	8	GG	192	488,92	487,55		130	460	60	60	20		24,09

8M

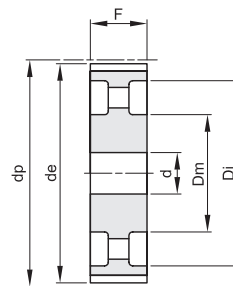
PITCH 8 mm
FOR BELT WIDTH 85 mm



2F



7F



8

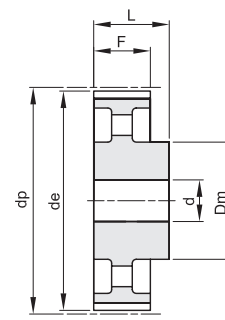
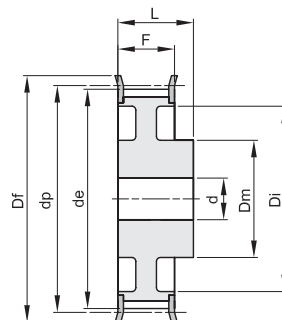
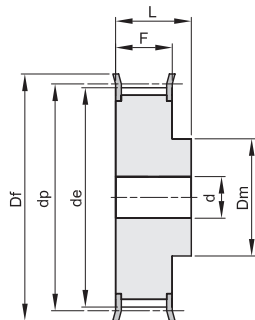
Материал Стомана (St) / Material Steel (St)

Материал Чугун (GG) / Material Cast Iron (GG)

code	type	material	teeth	dp	de	Df	Dm	Di	F	L	d	n° flange	Kg.
22 8M 85	2F	St	22	56,02	54,65	60	43		95	105	12	308	1,60
24 8M 85	2F	St	24	61,11	59,74	66	45		95	105	12	310	1,95
26 8M 85	2F	St	26	66,21	64,84	71	48		95	105	12	311	2,30
28 8M 85	2F	St	28	71,30	70,08	75	50		95	105	14	312	2,60
30 8M 85	2F	St	30	76,39	75,13	83	55		95	105	14	314	3,10
32 8M 85	2F	St	32	81,49	80,16	87	60		95	105	14	315	3,70
34 8M 85	2F	St	34	86,58	85,21	91	66		95	105	14	316	4,00
36 8M 85	2F	St	36	91,67	90,30	98	70		95	105	14	319	4,70
38 8M 85	2F	St	38	96,77	95,39	103	75		95	105	14	320	5,10
40 8M 85	2F	St	40	101,86	100,49	106	75		95	105	14	321	5,40
44 8M 85	2F	St	44	112,05	110,67	119	75		95	105	14	325	6,70
48 8M 85	2F	St	48	122,23	120,86	127	75		95	105	14	327	8,17
56 8M 85	2F	St	56	142,60	141,23	148	90		95	105	18	333	11,48
64 8M 85	7F	St	64	162,97	161,60	168	100	137	95	95	18	338	11,02
72 8M 85	7F	St	72	183,35	181,97	192	100	158	95	95	18	340	13,45
80 8M 85	8	GG	80	203,72	202,35		110	180	95	95	20		12,36
90 8M 85	8	GG	90	229,18	227,81		110	204	95	95	20		14,38
112 8M 85	8	GG	112	285,21	283,83		110	254	95	95	24		18,66
144 8M 85	8	GG	144	366,69	365,32		110	341	95	95	24		23,00
* 168 8M 85	8	GG	168	427,81	426,44		120	400	95	95	24		
* 192 8M 85	8	GG	192	488,92	487,55		130	460	95	95	24		

14M

PITCH 14 mm
FOR BELT WIDTH 40 mm



Материал Стомана (St) / Material Steel (St)

Материал Чугун (GG) / Material Cast Iron (GG)

2F

3F

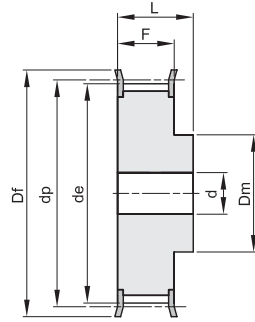
4

code	type	material	teeth	dp	de	Df	Dm	Di	F	L	d	n° flange	Kg.
28 14M 40	2F	St	28	124,78	122,12	127	100		54	69	24	400	4,80
30 14M 40	2F	St	30	133,69	130,99	138	100		54	69	24	401	5,60
32 14M 40	2F	St	32	142,60	139,88	154	100		54	69	24	403	6,20
34 14M 40	2F	St	34	151,52	148,79	160	100		54	69	24	404	6,90
36 14M 40	2F	St	36	160,43	157,68	168	100		54	69	24	405	7,70
38 14M 40	2F	St	38	169,34	166,60	183	120		54	69	24	406	8,90
40 14M 40	2F	St	40	178,25	175,49	188	120		54	69	24	407	9,80
44 14M 40	2F	St	44	196,08	193,28	211	120		54	69	24	411	12,00
48 14M 40	3F	GG	48	213,90	211,11	226	135	170	54	69	24	412	11,98
56 14M 40	3F	GG	56	249,55	246,76	256	135	207	54	69	28	416	14,01
64 14M 40	3F	GG	64	285,21	282,41	296	135	240	54	69	28	418	16,65
72 14M 40	4	GG	72	320,86	318,06		135	278	54	69	28		15,52
80 14M 40	4	GG	80	356,51	353,71		135	314	54	69	28		17,23
90 14M 40	4	GG	90	401,07	398,28		135	358	54	69	28		19,40
112 14M 40	4	GG	112	499,11	496,32		135	456	54	69	28		24,14
* 144 14M 40	4	GG	144	641,71	638,92		135	600	54	69	28		
* 168 14M 40	4	GG	168	748,66	745,87		135	706	54	69	28		
* 192 14M 40	4	GG	192	855,62	852,82		135	813	54	69	28		

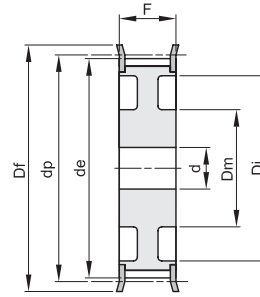
* Manufactured on request.

14M

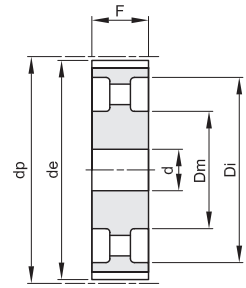
PITCH 14 mm
FOR BELT WIDTH 55 mm



2F



7F



8

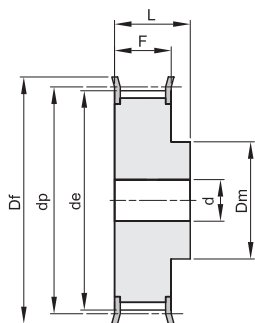
Материал Стомана (St) / Material Steel (St)

Материал Чугун (GG) / Material Cast Iron (GG)

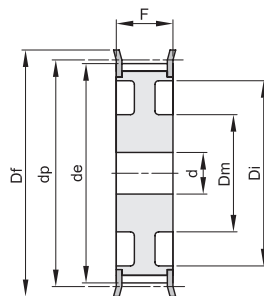
code	type	material	teeth	dp	de	Df	Dm	Di	F	L	d	n° flange	Kg.
28 14M 55	2F	St	28	124,78	122,12	127	100		70	85	24	400	5,70
30 14M 55	2F	St	30	133,69	130,99	138	100		70	85	24	401	7,10
32 14M 55	2F	St	32	142,60	139,88	154	100		70	85	24	403	7,90
34 14M 55	2F	St	34	151,52	148,79	160	100		70	85	24	404	9,33
36 14M 55	2F	St	36	160,43	157,68	168	100		70	85	24	405	10,49
38 14M 55	2F	St	38	169,34	166,60	183	120		70	85	24	406	12,11
40 14M 55	2F	St	40	178,25	175,49	188	120		70	85	24	407	13,30
44 14M 55	2F	St	44	196,08	193,28	211	120		70	85	24	411	16,12
48 14M 55	7F	GG	48	213,90	211,11	226	135	170	70	70	24	412	13,50
56 14M 55	7F	GG	56	249,55	246,76	256	135	207	70	70	28	416	15,78
64 14M 55	7F	GG	64	285,21	282,41	296	135	240	70	70	28	418	19,04
72 14M 55	8	GG	72	320,86	318,06		135	278	70	70	28		18,41
80 14M 55	8	GG	80	356,51	353,71		135	314	70	70	28		20,27
90 14M 55	8	GG	90	401,07	398,28		135	358	70	70	28		22,98
112 14M 55	8	GG	112	499,11	496,32		135	456	70	70	28		29,29
144 14M 55	8	GG	144	641,71	638,92		135	600	70	70	28		36,00
168 14M 55	8	GG	168	748,66	745,87		135	706	70	70	28		40,00
192 14M 55	8	GG	192	855,62	852,82		135	813	70	70	28		47,50

14M

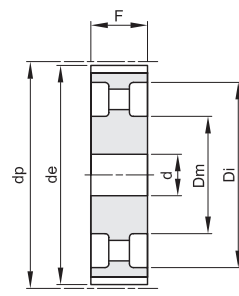
PITCH 14 mm
FOR BELT WIDTH 85 mm



2F



7F



8

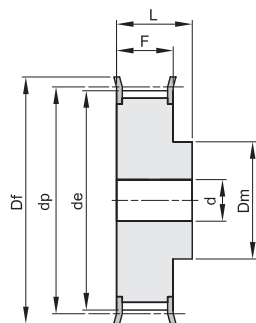
Материал Стомана (St) / Material Steel (St)

Материал Чугун (GG) / Material Cast Iron (GG)

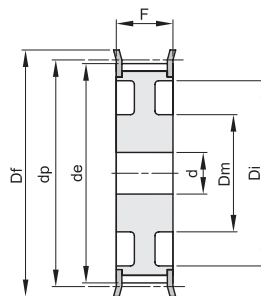
code	type	material	teeth	dp	de	Df	Dm	Di	F	L	d	n° flange	Kg.
28 14M 85	2F	St	28	124,78	122,12	127	100		102	117	24	400	8,77
30 14M 85	2F	St	30	133,69	130,99	138	100		102	117	24	401	10,13
32 14M 85	2F	St	32	142,60	139,88	154	100		102	117	24	403	11,65
34 14M 85	2F	St	34	151,52	148,79	160	100		102	117	24	404	13,15
36 14M 85	2F	St	36	160,43	157,68	168	100		102	117	32	405	14,48
38 14M 85	2F	St	38	169,34	166,60	183	120		102	117	32	406	16,62
40 14M 85	2F	St	40	178,25	175,49	188	135		102	117	32	407	18,84
44 14M 85	2F	St	44	196,08	193,28	211	135		102	117	32	411	22,86
48 14M 85	2F	St	48	213,90	211,11	226	150		102	117	32	412	27,58
56 14M 85	7F	GG	56	249,55	246,76	256	150	207	102	102	32	416	24,19
64 14M 85	7F	GG	64	285,21	282,41	296	150	240	102	102	32	418	28,57
72 14M 85	8	GG	72	320,86	318,06		150	278	102	102	32		28,26
80 14M 85	8	GG	80	356,51	353,71		150	314	102	102	32		31,00
90 14M 85	8	GG	90	401,07	398,28		150	358	102	102	32		35,00
112 14M 85	8	GG	112	499,11	496,32		150	456	102	102	32		43,50
144 14M 85	8	GG	144	641,71	638,92		150	600	102	102	32		50,00
168 14M 85	8	GG	168	748,66	745,87		150	706	102	102	32		63,00
192 14M 85	8	GG	192	855,62	852,82		165	813	102	102	32		76,00

14M

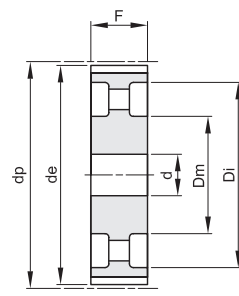
PITCH 14 mm
FOR BELT WIDTH 115 mm



2F



7F



8

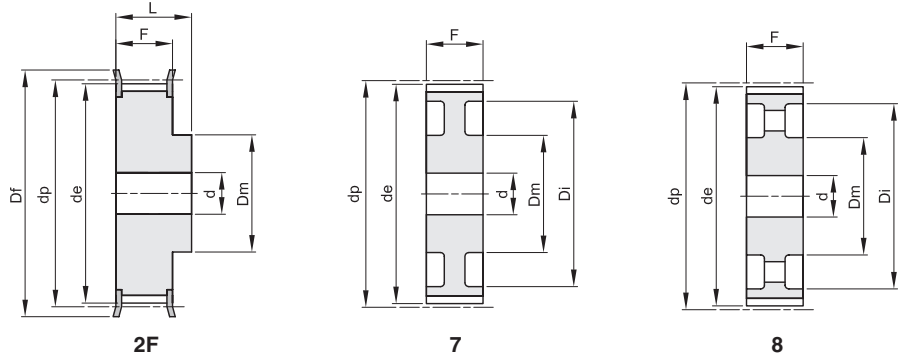
Материал Стомана (St) / Material Steel (St)

Материал Чугун (GG) / Material Cast Iron (GG)

code	type	material	teeth	dp	de	Df	Dm	Di	F	L	d	n° flange	Kg.
28 14M 115	2F	St	28	124,78	122,12	127	100		133	148	32	400	10,75
30 14M 115	2F	St	30	133,69	130,99	138	100		133	148	32	401	12,52
32 14M 115	2F	St	32	142,60	139,88	154	100		133	148	32	403	14,48
34 14M 115	2F	St	34	151,52	148,79	160	100		133	148	32	404	16,45
36 14M 115	2F	St	36	160,43	157,68	168	120		133	148	32	405	18,99
38 14M 115	2F	St	38	169,34	166,60	183	120		133	148	32	406	21,31
40 14M 115	2F	St	40	178,25	175,49	188	135		133	148	32	407	24,04
44 14M 115	2F	St	44	196,08	193,28	211	140		133	148	32	411	29,41
48 14M 115	2F	St	48	213,90	211,11	226	150		133	148	32	412	35,00
56 14M 115	2F	St	56	249,55	246,76	256	150		133	148	32	416	48,00
64 14M 115	7F	GG	64	285,21	282,41	296	150	240	133	133	32	418	36,00
72 14M 115	8	GG	72	320,86	318,06		150	278	133	133	32		36,00
80 14M 115	8	GG	80	356,51	353,71		150	314	133	133	32		40,00
90 14M 115	8	GG	90	401,07	398,28		150	358	133	133	32		45,00
112 14M 115	8	GG	112	499,11	496,32		150	456	133	133	32		55,50
144 14M 115	8	GG	144	641,71	638,92		165	600	133	133	32		71,00
168 14M 115	8	GG	168	748,66	745,87		165	706	133	133	32		83,00
192 14M 115	8	GG	192	855,62	852,82		165	813	133	133	32		96,00

14M

PITCH 14 mm
FOR BELT WIDTH 170 mm

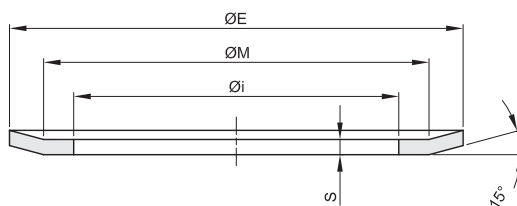


Материал Стомана (St) / Material Steel (St)

Материал Чугун (GG) / Material Cast Iron (GG)

code	type	material	teeth	dp	de	Df	Dm	Di	F	L	d	n° flange	Kg.
28 14M 170	2F	St	28	124,78	122,12	127	100		187	202	32	400	14,79
30 14M 170	2F	St	30	133,69	130,99	138	100		187	202	32	401	17,24
32 14M 170	2F	St	32	142,60	139,88	154	100		187	202	32	403	19,92
34 14M 170	2F	St	34	151,52	148,79	160	100		187	202	32	404	22,72
36 14M 170	2F	St	36	160,43	157,68	168	120		187	202	32	405	26,07
38 14M 170	2F	St	38	169,34	166,60	183	135		187	202	32	406	29,71
40 14M 170	2F	St	40	178,25	175,49	188	140		187	202	32	407	33,50
*44 14M 170	2F	St	44	196,08	193,28	211	160		187	202	32	411	
*48 14M 170	2F	St	48	213,90	211,11	226	160		187	202	32	412	
*56 14M 170	2F	St	56	249,55	246,76	256	160		187	202	32	416	
*64 14M 170	2F	St	64	285,21	282,41	296	180		187	202	32	418	
*72 14M 170	7	GG	72	320,86	318,06		180	278	187	187	32		
80 14M 170	7	GG	80	356,51	353,71		180	314	187	187	32		71,00
90 14M 170	8	GG	90	401,07	398,28		180	358	187	187	38		73,00
112 14M 170	8	GG	112	499,11	496,32		200	456	187	187	38		95,00
144 14M 170	8	GG	144	641,71	638,92		220	600	187	187	38		114,00
168 14M 170	8	GG	168	748,66	745,87		220	706	187	187	38		142,00
*192 14M 170	8	GG	192	855,62	852,82		220	813	187	187	38		

* Manufactured on request.



thickness S=0.5mm				thickness S=1.0mm				thickness S=1.5mm				thickness S=2.5mm			
n° flange	Ø E	Ø M	Ø i	n° flange	Ø E	Ø M	Ø i	n° flange	Ø E	Ø M	Ø i	n° flange	Ø E	Ø M	Ø i
100	13	10	6	200	19,5	17,5	12,5	300	36	31	25	400	127	120,2	104,7
101	15	12	8	201	23	17,5	12	301	38	34	28	401	138	130	108
102	16	13	9,5	202	23	20	14	302	42	38	30,5	402	146	138	116
104	18	15	11,5	203	25	22	15	303	44	40	33	403	154	146	122
105	19,5	17,5	12	204	28	24	18	304	48	43,5	37	404	160	150	128
106	23	17,5	12	205	32	28	21,5	305	51	47,5	40	405	168	162	135
107	23	20	14	206	36	31	25	306	54	50,5	43	406	183	170	145
108	25	22	15	207	38	34	28	307	57	53	46	407	188	180	158
109	28	24	18	208	42	38	30,5	308	60	57	47	409	198	188	165
110	32	28	21,5	209	44	40	33	309	63	57	48	410	200	192,8	172
111	36	31	25	210	48	43,5	37	310	66	61,5	52	411	211	198	173
112	38	34	28	211	51	47,5	40	311	71	65	56	412	226	214	190
113	42	38	30,5	212	54	50,5	43	312	75	68,5	60	414	240	224	192
114	48	43,5	37	213	57	53	46	313	79	73,5	64	415	256	240	220
				214	60	57	47	314	83	76,5	68	416	256	247	225
				215	63	57	48	315	87	82,5	72	418	296	287	252
				216	66	61,5	52	316	91	85,5	76				
				217	71	65	56	317	93	89	80				
				218	75	68,5	60	318	97	93	83				
				219	83	76,5	68	319	98	92	79,3				
				220	87	82,5	72	320	103	97	86				
				221	91	85,5	76	321	106	101	90				
				222	93	89	80	322	111	106	94				
				223	97	93	83	323	115	110	99				
				224	106	101	90	325	119	113,5	103				
				225	119	113,5	103	326	123	117,5	107				
				226	131	125,5	115	327	127	122	111				
								328	135	130	119				
								330	140	134,5	123				
								331	143	139	127				
								333	148	143	132				
								334	152	147,5	136				
								335	158	154	142				
								338	168	163	149,5				
								339	184	179	165				
								340	192	187	173				
								342	200	195	181				

N°THEET PULLEY	MXL TH. 0,5	XL TH. 1	L TH. 1,5	H TH. 1,5	XH TH. 2,5	HTD 3M TH. 0,5	HTD 5M TH. 1	HTD 8M TH. 1,5	HTD 14M TH. 2,5	T 2,5 TH. 0,5	T 5 TH. 1	T 10 TH. 1	BAT 5 TH. 1	BAT 10 TH. 1
10		201	300			100					200	206		
11		201	301								201	207		
12	100	203	302			101	202			100	201	208	201	208
13		203	303				203			100	203	209	203	
14	100	204	304	309		102	203			101	203	210	203	210
15	100	204	305	310		104	204			101	204	211	204	211
16	101	205	306	311		104	204			102	205	212	205	212
17		205	307	312			205			104	205	213	205	213
18	102	206	308	313	401	105	205	304		104	205	214	205	214
19		206	309	314	402		205	305		104	206	216	206	216
20	102	207	310	315	403	107	206	306		105	206	216	206	216
21		207	311	316	404	108	207	307		105	207	217	207	217
22	104	208	312	317	405	108	207	308		106	207	218	207	218
23		208	313	318			208	309			208	313	208	313
24	104	209	313	320	406	108	208	310		107	208	219	208	219
25	105	210	314	321	407		209	310		107	209	219	209	219
26	106	210	315	322	409	109	209	311		108	209	220	209	220
27		210	315	323	410		210				210	221	210	221
28	107	211	316	325	411	110	210	312	400	108	210	222	210	222
29		211		326						109	211			
30	107	212	318	327	412	110	211	314	401	109	211	223	211	223
32	108	213	320	328	414	111	212	315	403	110	212	224	212	224
33		213	321	330										
34	108	214	322	331	415		213	316	404	110	213	323	213	323
35		215	322	333				317		110	214			
36	109	216	323	334		112	214	319	405	111	215	225	215	225
37											215			
38	109	217		335			216	320	406	111	216	327	216	327
39		217												
40	110	217	327	338		113	217	321	407	112	216	226	216	226
41		218												
42	110	218	328				218				217		217	330
43		313												
44	111	313	330	339		114	218	325	411	113	218		218	331
45	111		331	340			313			113	313	333		
46											313		313	334
48	111	220	334	342			219	327	412		219	335	219	335
50	112						220			209	220			
52													220	338
56		223					222	333	416				222	339
58													223	340
60	113	320					320			211	320	342	320	342
64							224	338	418					224
65										213				
70	211									215				
72	211	326					225	340		215	225		225	
80											226			
90										219	333			
100										220	338			