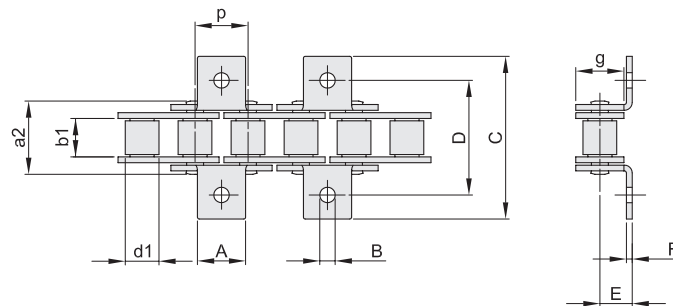


## ATTACHMENT TYPE A1/02

CHAIN PRODUCED BY ISO 9001

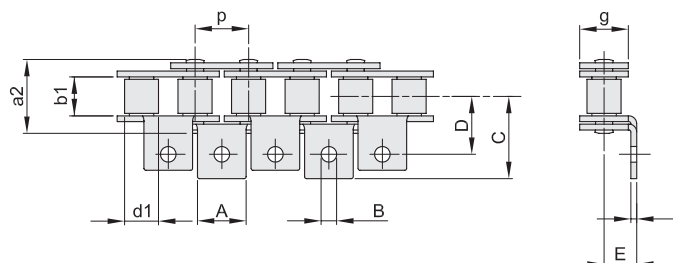
ISO	p		b <sub>1</sub> mm min.	d <sub>1</sub> mm max.	a <sub>2</sub> mm max.	g mm max.	A mm	B mm	C mm max.	D mm	E mm	F mm	Breaking load		KG/m ≈
	mm	inch											minimum KN	average KN	
<b>06B-1</b>	9,525	3/8"	5,72	6,35	13,5	8,26	8,0	3,5	13,5	9,5	6,5	1,03	9,0	10,7	0,46
<b>08B-1</b>	12,7	1/2"	7,75	8,51	17,0	11,81	9,5	4,3	18,6	14,1	8,4	1,40	18,0	21,1	0,77
<b>10B-1</b>	15,875	5/8"	9,65	10,16	19,6	14,73	14,1	5,2	23,8	15,9	10,4	1,63	22,4	27,4	1,04
<b>12B-1</b>	19,05	3/4"	11,68	12,07	22,7	16,13	15,8	5,6	25,8	17,5	12,0	1,80	29,0	32,3	1,35
<b>16B-1</b>	25,4	1"	17,02	15,88	36,1	21,08	19,0	6,8	37,4	25,4	15,9	3,00	60,0	70,6	2,83



## ATTACHMENT TYPE K1/02

CHAIN PRODUCED BY ISO 9001

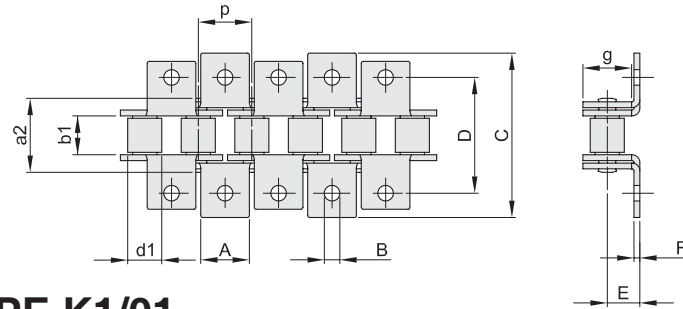
ISO	p		b <sub>1</sub> mm min.	d <sub>1</sub> mm max.	a <sub>2</sub> mm max.	g mm max.	A mm	B mm	C mm max.	D mm	E mm	F mm	Breaking load		KG/m ≈
	mm	inch											minimum KN	average KN	
<b>06B-1</b>	9,525	3/8"	5,72	6,35	13,5	8,26	8,0	3,5	27,0	19,0	6,5	1,03	9,0	10,7	0,51
<b>08B-1</b>	12,7	1/2"	7,75	8,51	17,0	11,81	9,5	4,3	37,2	28,2	8,4	1,40	18,0	21,1	0,85
<b>10B-1</b>	15,875	5/8"	9,65	10,16	19,6	14,73	14,1	5,2	47,6	31,8	10,4	1,63	22,4	27,4	1,13
<b>12B-1</b>	19,05	3/4"	11,68	12,07	22,7	16,13	15,8	5,6	51,6	35,0	12,0	1,80	29,0	32,3	1,45
<b>16B-1</b>	25,4	1"	17,02	15,88	36,1	21,08	19,0	6,8	74,8	50,8	15,9	3,00	60,0	70,6	3,48



## ATTACHMENT TYPE A1/01

CHAIN PRODUCED BY ISO 9001

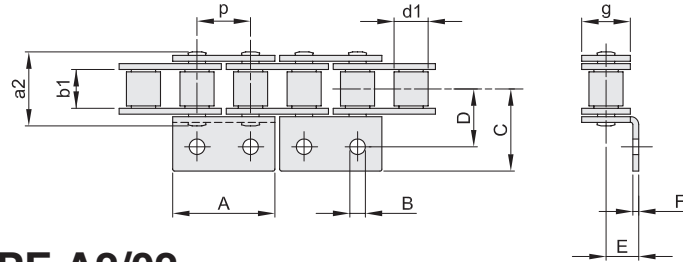
ISO	p		b <sub>1</sub> mm min.	d <sub>1</sub> mm max.	a <sub>2</sub> mm max.	g mm max.	A mm	B mm	C mm max.	D mm	E mm	F mm	Breaking load		KG/m ≈
	mm	inch											minimum KN	average KN	
<b>06B-1</b>	9,525	3/8"	5,72	6,35	13,5	8,26	8,0	3,5	13,5	9,5	6,5	1,03	9,0	10,7	0,51
<b>08B-1</b>	12,7	1/2"	7,75	8,51	17,0	11,81	9,5	4,3	18,6	14,1	8,4	1,40	18,0	21,1	0,85
<b>10B-1</b>	15,875	5/8"	9,65	10,16	19,6	14,73	14,1	5,2	23,8	15,9	10,4	1,63	22,4	27,4	1,13
<b>12B-1</b>	19,05	3/4"	11,68	12,07	22,7	16,13	15,8	5,6	25,8	17,5	12,0	1,80	29,0	32,3	1,45
<b>16B-1</b>	25,4	1"	17,02	15,88	36,1	21,08	19,0	6,8	37,4	25,4	15,9	3,00	60,0	70,6	3,48



## ATTACHMENT TYPE K1/01

CHAIN PRODUCED BY ISO 9001

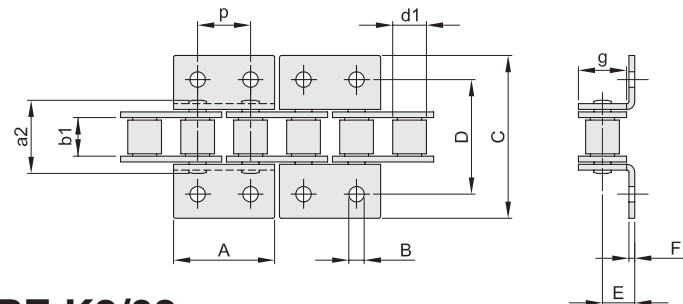
ISO	p		b <sub>1</sub> mm min.	d <sub>1</sub> mm max.	a <sub>2</sub> mm max.	g mm max.	A mm	B mm	C mm max.	D mm	E mm	F mm	Breaking load		KG/m ≈
	mm	inch											minimum KN	average KN	
<b>06B-1</b>	9,525	3/8"	5,72	6,35	13,5	8,26	8,0	3,5	27,0	19,0	6,5	1,03	9,0	10,7	0,61
<b>08B-1</b>	12,7	1/2"	7,75	8,51	17,0	11,81	9,5	4,3	37,2	28,2	8,4	1,40	18,0	21,1	1,01
<b>10B-1</b>	15,875	5/8"	9,65	10,16	19,6	14,73	14,1	5,2	47,6	31,8	10,4	1,63	22,4	27,4	1,32
<b>12B-1</b>	19,05	3/4"	11,68	12,07	22,7	16,13	15,8	5,6	51,6	35,0	12,0	1,80	29,0	32,3	1,66
<b>16B-1</b>	25,4	1"	17,02	15,88	36,1	21,08	19,0	6,8	74,8	50,8	15,9	3,00	60,0	70,6	4,27



## ATTACHMENT TYPE A2/02

CHAIN PRODUCED BY ISO 9001

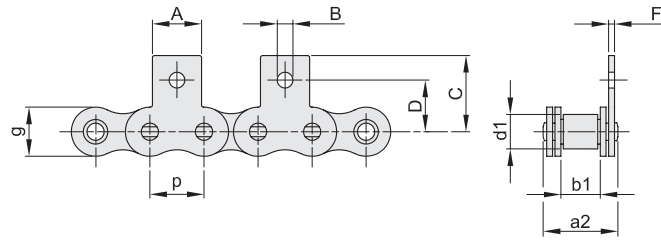
ISO	p		b <sub>1</sub> mm min.	d <sub>1</sub> mm max.	a <sub>2</sub> mm max.	g mm max.	A mm	B mm	C mm max.	D mm	E mm	F mm	Breaking load		KG/m ≈
	mm	inch											minimum KN	average KN	
<b>06B-1</b>	9,525	3/8"	5,72	6,35	13,5	8,26	17,6	3,5	13,5	9,5	6,5	1,03	9,0	10,7	0,51
<b>08B-1</b>	12,7	1/2"	7,75	8,51	17,0	11,81	23,2	4,3	18,6	14,1	8,4	1,40	18,0	21,1	0,85
<b>10B-1</b>	15,875	5/8"	9,65	10,16	19,6	14,73	29,3	5,2	23,8	15,9	10,4	1,63	22,4	27,4	1,13
<b>12B-1</b>	19,05	3/4"	11,68	12,07	22,7	16,13	33,0	5,6	30,5	17,5	12,0	1,80	29,0	32,3	1,45
<b>16B-1</b>	25,4	1"	17,02	15,88	36,1	21,08	46,0	6,8	39,1	25,4	15,9	3,00	60,0	70,6	3,19



## ATTACHMENT TYPE K2/02

CHAIN PRODUCED BY ISO 9001

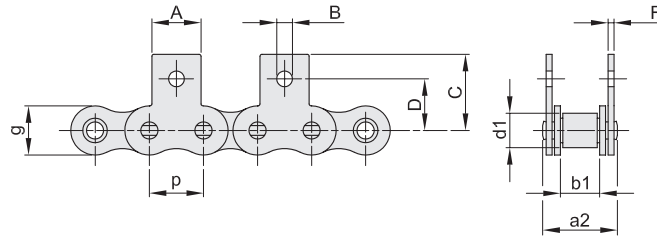
ISO	p		b <sub>1</sub> mm min.	d <sub>1</sub> mm max.	a <sub>2</sub> mm max.	g mm max.	A mm	B mm	C mm max.	D mm	E mm	F mm	Breaking load		KG/m ≈
	mm	inch											minimum KN	average KN	
<b>06B-1</b>	9,525	3/8"	5,72	6,35	13,5	8,26	17,6	3,5	27,0	19	6,5	1,03	9,0	10,7	0,61
<b>08B-1</b>	12,7	1/2"	7,75	8,51	17,0	11,81	23,2	4,3	37,2	28,2	8,4	1,40	18,0	21,1	1,01
<b>10B-1</b>	15,875	5/8"	9,65	10,16	19,6	14,73	29,3	5,2	47,6	31,8	10,4	1,63	22,4	27,4	1,32
<b>12B-1</b>	19,05	3/4"	11,68	12,07	22,7	16,13	33,0	5,6	61,0	35,0	12,0	1,80	29,0	32,3	1,66
<b>16B-1</b>	25,4	1"	17,02	15,88	36,1	21,08	46,0	6,8	78,2	50,8	15,9	3,00	60,0	70,6	3,78



## ATTACHMENT TYPE M1/02

CHAIN PRODUCED BY ISO 9001

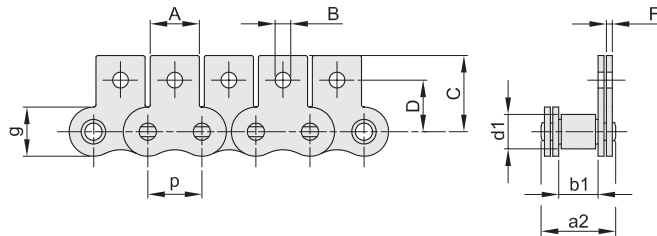
ISO	p		b <sub>1</sub> mm min.	d <sub>1</sub> mm max.	a <sub>2</sub> mm max.	g mm max.	A mm	B mm	C mm max.	D mm	F mm	Breaking load		KG/m ≈
	mm	inch										minimum KN	average KN	
<b>06B-1</b>	9,525	3/8"	5,72	6,35	13,5	8,26	8,0	3,5	13,5	9,5	1,03	9,0	10,7	0,46
<b>08B-1</b>	12,7	1/2"	7,75	8,51	17,0	11,81	9,5	4,3	18,4	14,1	1,40	18,0	21,1	0,77
<b>10B-1</b>	15,875	5/8"	9,65	10,16	19,6	14,73	14,1	5,2	24,7	15,9	1,63	22,4	27,4	1,04
<b>12B-1</b>	19,05	3/4"	11,68	12,07	22,7	16,13	15,8	5,6	26,6	17,9	1,80	29,0	32,3	1,35
<b>16B-1</b>	25,4	1"	17,02	15,88	36,1	21,08	19,0	6,8	35,0	26,0	3,00	60,0	70,6	3,09



## ATTACHMENT TYPE MK1/02

CHAIN PRODUCED BY ISO 9001

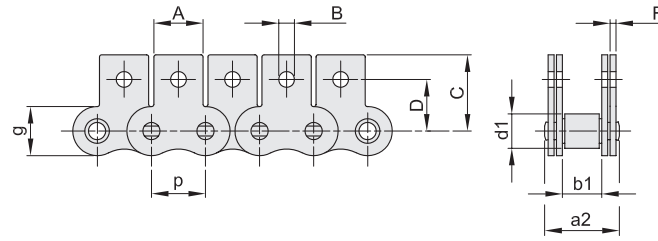
ISO	p		b <sub>1</sub> mm min.	d <sub>1</sub> mm max.	a <sub>2</sub> mm max.	g mm max.	A mm	B mm	C mm max.	D mm	F mm	Breaking load		KG/m ≈
	mm	inch										minimum KN	average KN	
<b>06B-1</b>	9,525	3/8"	5,72	6,35	13,5	8,26	8,0	3,5	13,5	9,5	1,03	9,0	10,7	0,51
<b>08B-1</b>	12,7	1/2"	7,75	8,51	17,0	11,81	9,5	4,3	18,4	14,1	1,40	18,0	21,1	0,85
<b>10B-1</b>	15,875	5/8"	9,65	10,16	19,6	14,73	14,1	5,2	24,7	15,9	1,63	22,4	27,4	1,13
<b>12B-1</b>	19,05	3/4"	11,68	12,07	22,7	16,13	15,8	5,6	26,6	17,9	1,80	29,0	32,3	1,45
<b>16B-1</b>	25,4	1"	17,02	15,88	36,1	21,08	19,0	6,8	35,0	26,0	3,00	60,0	70,6	3,48



## ATTACHMENT TYPE M1/01

CHAIN PRODUCED BY ISO 9001

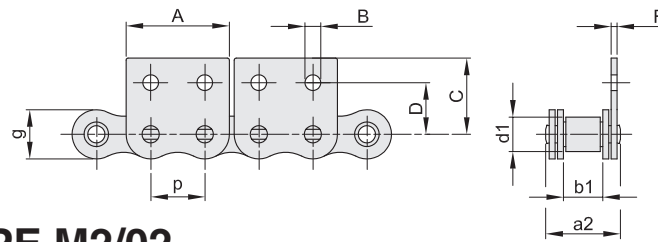
ISO	p		b <sub>1</sub> mm min.	d <sub>1</sub> mm max.	a <sub>2</sub> mm max.	g mm max.	A mm	B mm	C mm max.	D mm	F mm	Breaking load		KG/m ≈
	mm	inch										minimum KN	average KN	
<b>06B-1</b>	9,525	3/8"	5,72	6,35	13,5	8,26	8,0	3,5	13,5	9,5	1,03	9,0	10,7	0,51
<b>08B-1</b>	12,7	1/2"	7,75	8,51	17,0	11,81	9,5	4,3	18,4	14,1	1,40	18,0	21,1	0,85
<b>10B-1</b>	15,875	5/8"	9,65	10,16	19,6	14,73	14,1	5,2	24,7	15,9	1,63	22,4	27,4	1,13
<b>12B-1</b>	19,05	3/4"	11,68	12,07	22,7	16,13	15,8	5,6	26,6	17,9	1,80	29,0	32,3	1,45
<b>16B-1</b>	25,4	1"	17,02	15,88	36,1	21,08	19,0	6,8	35,0	26,0	3,00	60,0	70,6	3,48



## ATTACHMENT TYPE MK1/01

CHAIN PRODUCED BY ISO 9001

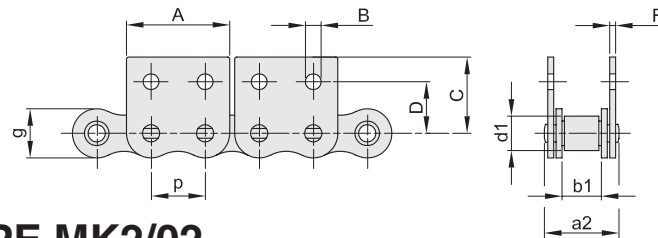
ISO	p		b <sub>1</sub> mm min.	d <sub>1</sub> mm max.	a <sub>2</sub> mm max.	g mm max.	A mm	B mm	C mm max.	D mm	F mm	Breaking load		KG/m ≈
	mm	inch										minimum KN	average KN	
<b>06B-1</b>	9,525	3/8"	5,72	6,35	13,5	8,26	8,0	3,5	13,5	9,5	1,03	9,0	10,7	0,61
<b>08B-1</b>	12,7	1/2"	7,75	8,51	17,0	11,81	9,5	4,3	18,4	14,1	1,40	18,0	21,1	1,01
<b>10B-1</b>	15,875	5/8"	9,65	10,16	19,6	14,73	14,1	5,2	24,7	15,9	1,63	22,4	27,4	1,32
<b>12B-1</b>	19,05	3/4"	11,68	12,07	22,7	16,13	15,8	5,6	26,6	17,9	1,80	29,0	32,3	1,66
<b>16B-1</b>	25,4	1"	17,02	15,88	36,1	21,08	19,0	6,8	35,0	26,0	3,00	60,0	70,6	4,27



## ATTACHMENT TYPE M2/02

CHAIN PRODUCED BY ISO 9001

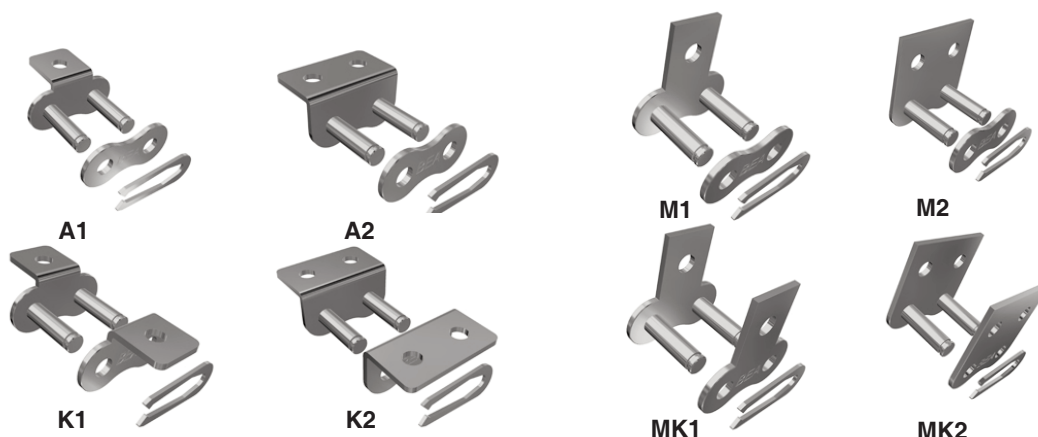
ISO	p		b <sub>1</sub> mm min.	d <sub>1</sub> mm max.	a <sub>2</sub> mm max.	g mm max.	A mm	B mm	C mm max.	D mm	F mm	Breaking load		KG/m ≈
	mm	inch										minimum KN	average KN	
<b>06B-1</b>	9,525	3/8"	5,72	6,35	13,5	8,26	17,6	3,2	13,5	9,5	1,03	9,0	10,7	0,51
<b>08B-1</b>	12,7	1/2"	7,75	8,51	17,0	11,81	23,2	4,3	18,4	14,1	1,40	18,0	21,1	0,85
<b>10B-1</b>	15,875	5/8"	9,65	10,16	19,6	14,73	29,3	5,2	24,7	15,9	1,63	22,4	27,4	1,13
<b>12B-1</b>	19,05	3/4"	11,68	12,07	22,7	16,13	33,0	5,6	31,3	17,9	1,80	29,0	32,3	1,45
<b>16B-1</b>	25,4	1"	17,02	15,88	36,1	21,08	45,9	6,8	36,6	26,0	3,00	60,0	70,6	3,48



## ATTACHMENT TYPE MK2/02

CHAIN PRODUCED BY ISO 9001

ISO	p		b <sub>1</sub> mm min.	d <sub>1</sub> mm max.	a <sub>2</sub> mm max.	g mm max.	A mm	B mm	C mm max.	D mm	F mm	Breaking load		KG/m ≈
	mm	inch										minimum KN	average KN	
<b>06B-1</b>	9,525	3/8"	5,72	6,35	13,5	8,26	17,6	3,2	13,5	9,5	1,03	9,0	10,7	0,61
<b>08B-1</b>	12,7	1/2"	7,75	8,51	17,0	11,81	23,2	4,3	18,4	14,1	1,40	18,0	21,1	1,01
<b>10B-1</b>	15,875	5/8"	9,65	10,16	19,6	14,73	29,3	5,2	24,7	15,9	1,63	22,4	27,4	1,32
<b>12B-1</b>	19,05	3/4"	11,68	12,07	22,7	16,13	33,0	5,6	31,3	17,9	1,80	29,0	32,3	1,66
<b>16B-1</b>	25,4	1"	17,02	15,88	36,1	21,08	45,9	6,8	36,6	26,0	3,00	60,0	70,6	4,27



ATTACHMENT TYPE - A1/02			ATTACHMENT TYPE - M1-02		
ISO	p mm	type	ISO	p mm	type
06B-1	9,525	A1	06B-1	9,525	M1
08B-1	12,7	A1	08B-1	12,7	M1
10B-1	15,875	A1	10B-1	15,875	M1
12B-1	19,05	A1	12B-1	19,05	M1
16B-1	25,4	A1	16B-1	25,4	M1

ATTACHMENT TYPE - K1/02			ATTACHMENT TYPE - MK1-02		
ISO	p mm	type	ISO	p mm	type
06B-1	9,525	K1	06B-1	9,525	MK1
08B-1	12,7	K1	08B-1	12,7	MK1
10B-1	15,875	K1	10B-1	15,875	MK1
12B-1	19,05	K1	12B-1	19,05	MK1
16B-1	25,4	K1	16B-1	25,4	MK1

ATTACHMENT TYPE - A1/01			ATTACHMENT TYPE - M1-01		
ISO	p mm	type	ISO	p mm	type
06B-1	9,525	A1	06B-1	9,525	M1
08B-1	12,7	A1	08B-1	12,7	M1
10B-1	15,875	A1	10B-1	15,875	M1
12B-1	19,05	A1	12B-1	19,05	M1
16B-1	25,4	A1	16B-1	25,4	M1

ATTACHMENT TYPE - K1/01			ATTACHMENT TYPE - MK1-01		
ISO	p mm	type	ISO	p mm	type
06B-1	9,525	K1	06B-1	9,525	MK1
08B-1	12,7	K1	08B-1	12,7	MK1
10B-1	15,875	K1	10B-1	15,875	MK1
12B-1	19,05	K1	12B-1	19,05	MK1
16B-1	25,4	K1	16B-1	25,4	MK1

ATTACHMENT TYPE - A2/02			ATTACHMENT TYPE - M2-02		
ISO	p mm	type	ISO	p mm	type
06B-1	9,525	A2	06B-1	9,525	M2
08B-1	12,7	A2	08B-1	12,7	M2
10B-1	15,875	A2	10B-1	15,875	M2
12B-1	19,05	A2	12B-1	19,05	M2
16B-1	25,4	A2	16B-1	25,4	M2

ATTACHMENT TYPE - K2/02			ATTACHMENT TYPE - MK2-02		
ISO	p mm	type	ISO	p mm	type
06B-1	9,525	K2	06B-1	9,525	MK2
08B-1	12,7	K2	08B-1	12,7	MK2
10B-1	15,875	K2	10B-1	15,875	MK2
12B-1	19,05	K2	12B-1	19,05	MK2
16B-1	25,4	K2	16B-1	25,4	MK2